

JCP Newsletter

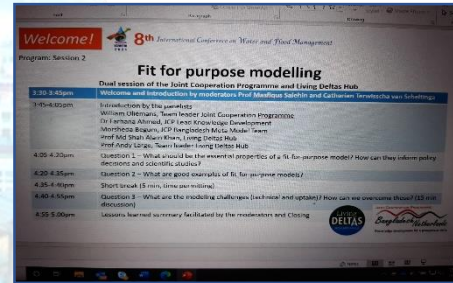
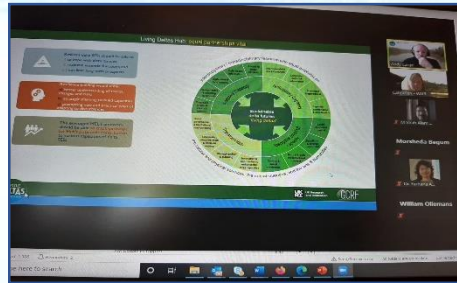
JUNE, 2021

This is the 7th Newsletter of the Joint Cooperation Programme Bangladesh – the Netherlands. JCP is an applied research programme, contributing to new knowledge supporting adaptive water management in Bangladesh and the implementation of the Bangladesh Delta Plan 2100

JCP in 1st ICWFM8



At ICWFM8 a dual session of the Joint Cooperation Programme(JCP) and Living Deltas Hub(LDH) was took place in 30/03/2021. The International Conference on Water and Flood Management has been organized by the Institute of Water and Flood Management (IWFM) of Bangladesh University of Engineering and Technology (BUET) biennially since 2007. ICWFM 2021 is the 8th event. Topic of JCP & LDH sessions was: “Fit for Purpose Modeling: what does it mean and what does it bring?” To understand complex reality we use models. This allows us to simulate, for instance, what will happen in the future, and to prepare accordingly. Models come in a variety of types: some simulate the physical reality in all its detail, others use key parameters and give guidance on strategic decisions. The format of the model, it may be argued, should therefore be ‘fit for its purpose’. In this session, we looked at various models currently used in Bangladesh, understand how they work, and what they can and cannot tell us with regard to their intended purpose.



In this Newsletter

JCP in ICWFM8

JCP subproject -Clean and Safe Water for Dhaka City & River and Delta Research Centre (RDRC) Meeting

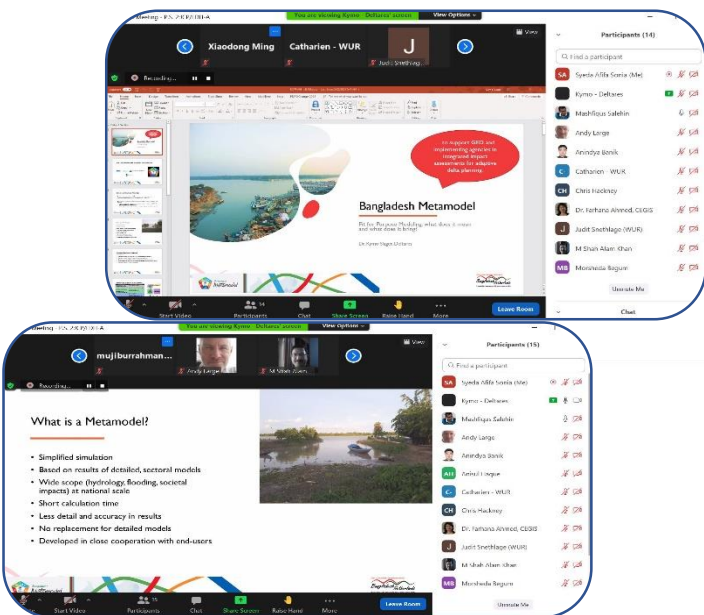
JCP Subproject: Make it Real work in progress Incubator project

Upcoming Events

Each session held for 90 minutes. Peoples from CEGIS, IWM, WUR, Deltares, LDH, BUET, GED, attend these sessions. These sessions were effective with lots of discussion & suggestions. In these sessions 3 questions were discussed :

- Question 1 – What should be the essential properties of a fit-for-purpose model? How can it inform policy decisions and scientific studies?
- Question 2 – What are good examples of fit-for-purpose models?
- Question 3 – What are the modeling challenges (technical and uptake)? How can we overcome those?

Key message of the JCP & LDH session was- Modelling is done to answer a question. Involvement of users and communication are essential. And also Essential for any model is not the construction of the model (however exciting and time consuming!) - but the use of the model. continued on page 2 -



Continued from page 1 – Fit for purpose modelling – BMM presentation

Dr. Kymo Slager, from JCP gave a presentation on Bangladesh Metamodel. In his presentation he described about what is Metamodel, its purpose and objectives. he mentioned that Bangladesh Metamodel is a simulation and it is based on combining results of detailed, sectoral models.

He also briefly described- about components of Metamodel. There are 6 components in Bangladesh Metamodel. Considering Fit for purpose modelling Bangladesh Metamodel is targeted at supporting stakeholders in national adaptive delta planning (co-operation): GED, ministries and implementing agencies

JCP subproject -Clean and Safe Water for Dhaka City & River and Delta Research Centre (RDRC) Meeting

Recently, Mr. Hans Aalderink, of JCP team of Clean and Safe Water for Dhaka City had a meeting with Mohammad Azaz of River and Delta Research Centre (RDRC), linking the joint interest and exploring how to use each others knowledge, for further impact.

In June, the team on Clean and Safe water is planning a webinar. If you are interested, please mail to

jcpbd.nl@gmail.com



JCP Subproject: Make it Real work in progress

JCP subproject “Make it Real- Water Food Nexus” currently working in online sessions on the application of the SWAP WOFOST model in a Bangladesh case with Bangladesh data, by Bangladesh colleagues – together with their WUR colleagues. Guiding questions are :

- 1.How can we use the SWAP-WOFOST model for the 8 different hydro-ecological zones to make an estimation per zone ?
- 2.How can SWAP-WOFOST help us to predict future water needs of crops?
- 3.How can we scale up the local results to regional/national future water needs?

In a webinar on 22nd June the team will share their results. Mail to jcpbd.nl@gmail.com if you are interested to join or want to know more.

Incubator projects

Within the JCP an incubator fund has been reserved, as seed money to develop upcoming research questions into promising knowledge initiatives in support of the overall JCP objective. The incubator facility also has the goal to create and develop new partnerships by developing promising knowledge initiatives in support of the overall JCP objective.

In the Annual Plan 2021, it was agreed to select 2 – 3 Incubator projects in 2021, involve new JCP partners and include private sector partners in at least 1 new project. By bringing new partners on board, fresh knowledge and perspectives are included and the potential client base is expanded.

The following 3 incubator projects were selected:

1. **CHAR** - Spatial planning and preparation of development plans for newly emerged stable chars in the estuary;
2. **MAR** - Managed aquifer recharge in the Barind region: identification of technical designs and potential for upscaling;
3. **LUCK** - Visualizing land use change for BDP2100 by improving land use change knowledge and modelling.



Upcoming Events

22 June	JCP Subproject: Make it Real (Water Food Nexus)– sharing webinar
End of June	JCP Subproject: Polders of the Future – sharing webinar
End of June	JCP Subproject: Clean and Safe Water for Dhaka City – sharing webinar
29 June	PhD Defense of Uthpal Kumar. All are invited to follow the defence of his PhD thesis entitled “BRIDGING SCIENCE AND SOCIETY: Tailor-made Hydroclimatic Information Service with Farmers in Lower Bengal Delta, Bangladesh” online through: https://weblectures.wur.nl/P2G/Player/Player.aspx?id=aulatv
In September	JCP seminar